

Advancing Medicaid Management through Information Technology

STC has developed the EPSDT Management Solution (EPSDT-MS), a web-based solution to support Early Periodic Screening, Diagnosis, and Treatment (EPSDT) service management. The solution can integrate with Medicaid Management Information Systems (MMIS) and immunization information systems (IIS), and can also operate as a standalone. EPSDT-MS addresses the growing need for EPSDT data collection, measures service quality, identifies health care gaps, analyzes public health outcomes, and supports decision making. EPSDT Form Management (EPSDT-FM) is part of the solution suite. The solution is designed to support Medicaid management, managed care organizations, and providers.

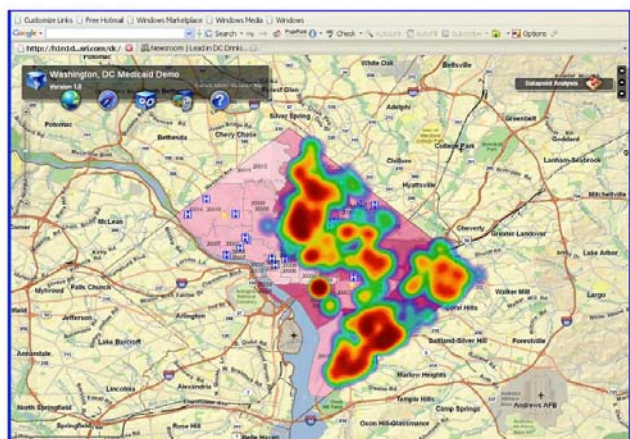
EPSDT-MS Objective

To utilize information technology and public health experience to enhance the EPSDT service quality through improving the data collection, information sharing, and delivery of comprehensive EPSDT management data.

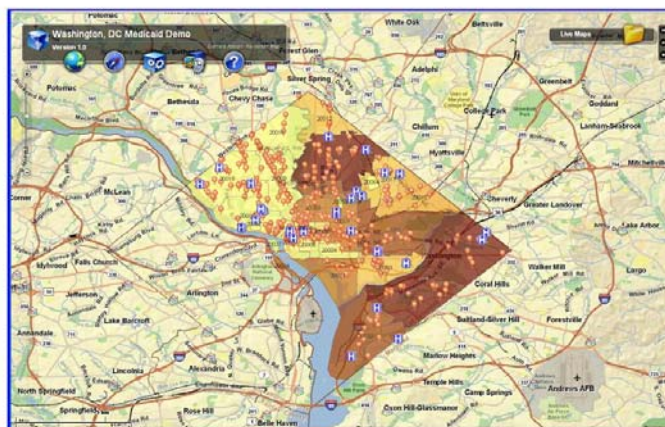
EPSDT-MS Solution

A flexible web-based application built on proven technologies to assist decision makers in identifying trends, efficient data processing, and delivering the required statistics with ease.

DC Medicaid Children (1-5 Year Old) BLL Risk Analysis



DC Medicaid Children (11-21 Year Old) TB Risk Analysis



Features

- Web-based application
- Enterprise GIS integration
- Direct provider entry support
- Secured & Audit logging
- MCO & provider reports
- Service quality measurement
- Public health outcome analysis

Reporting and GIS Analysis

- Summary of screens
- Immunizations summary
- Children at risk reports
- Children with chronic disease reports
- Completed service reports
- Performance reports
- Referral reports

For more information or a demonstration, please contact
Scientific Technologies Corporation